



2016 FRC Championship Practice Fields

There will be four full Formal Practice Fields, located in the pits, available for teams at the 2016 FRC Championship. All four Formal Practice Fields will be filled through a set of common first-come-first-serve filler lines. Teams will be able to specify a field preference (for defense purposes) upon reaching the front of the line. These Formal Practice Fields will be outfitted with the same communication equipment as the Division fields. **Teams will use their robot radio on these fields, just like on the Division fields (with the exception of Wednesday night).**

There will be no production equipment, which means that there will be no audible match sounds or countdown. Please keep an eye on the Field Timer to track match start, autonomous/teleop transition, and match end.

Informal Practice Fields, consisting of a wooden Tower Rung assembly, tower goal assembly, and defense platform assembly (with defenses) will be located adjacent to the Formal Practice Fields. These setups will be for tethered operation only. Teams will be allowed up to 15 min. on the field at a time, allocated on a first come, first serve basis. When using these areas please make sure you operate safely and are courteous about sharing the space with other teams.

Practice Field Defenses

The defenses on each Practice Field will be set in a fixed position. The defense positions have been selected so that all defenses are present on each field and that each defense is available in each position. For example, Field 1 will have Low Bar, Portcullis, Moat, Sally Port, and Rock Wall in the Red Alliance Outer Works (in that order) and Low Bar, Rough Terrain, Drawbridge, Ramparts, and Chival De Frise in the Blue Alliance Outer Works.

Hours of Operation

The Practice Fields will be open for practice during the following hours:

Wednesday (Tether)	Thursday (Wireless)	Friday (Wireless)
5:00PM – 8:00PM	7:30AM-12:00PM 1:00PM-5:00PM	7:30AM-12:00PM 1:00PM-6:30PM

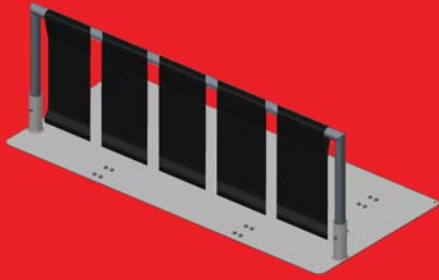
Filler Line

A pair of Filler Lines will be used to fill slots on all four Practice Fields. As long as there is space available, teams may join the line.

- Teams must have completed Inspection before participating in the Filler Line
- Teams working with a CSA on Control System issues will be given priority in the Filler Line

Practice Field 1

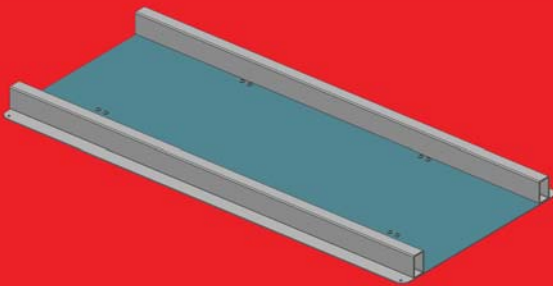
1



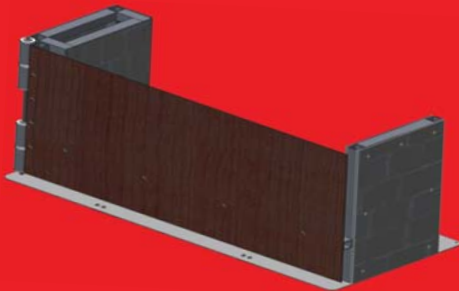
2



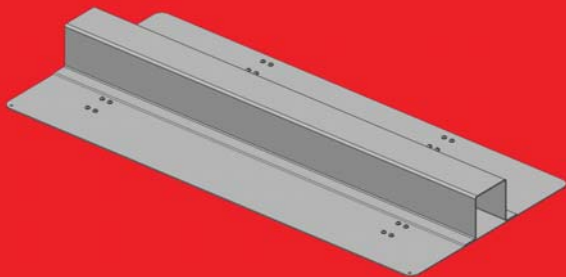
3



4



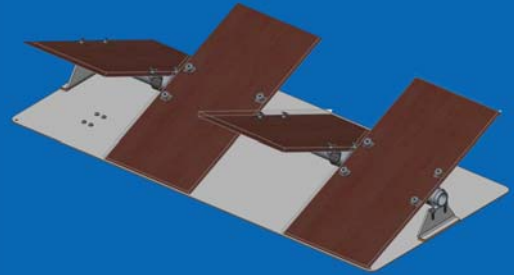
5



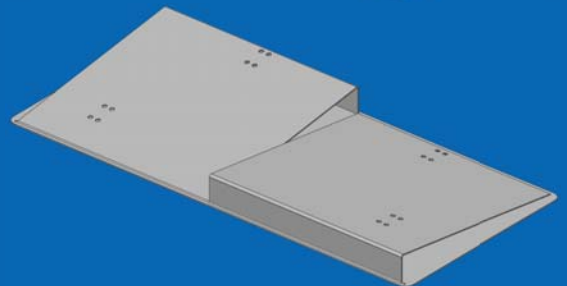
Red Outer Works

Blue Outer Works

5



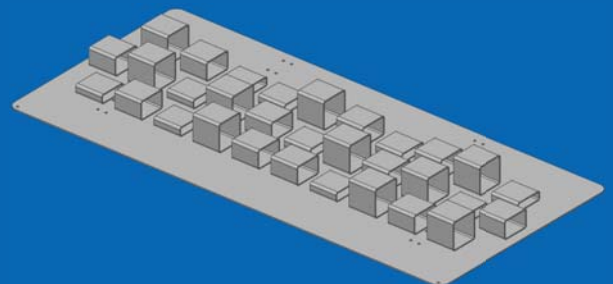
4



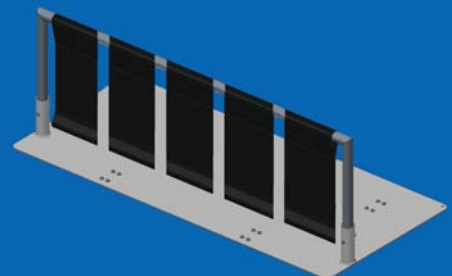
3



2

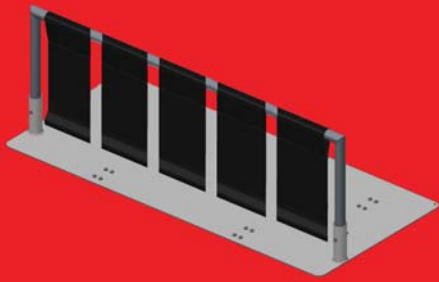


1

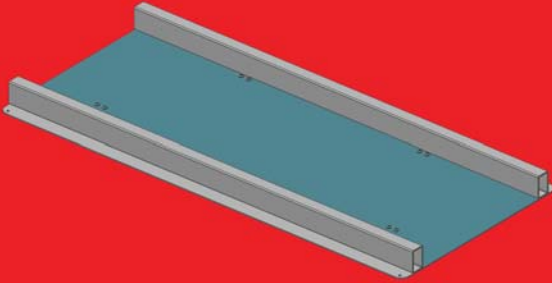


Practice Field 2

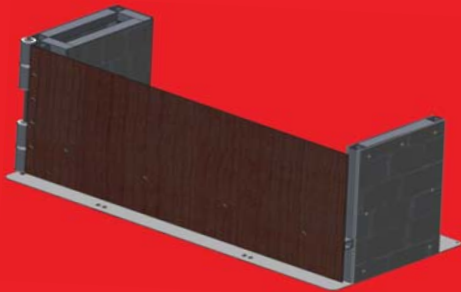
1



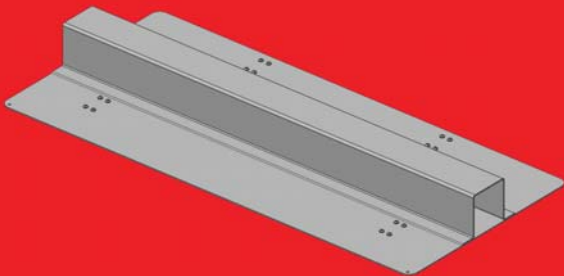
2



3



4



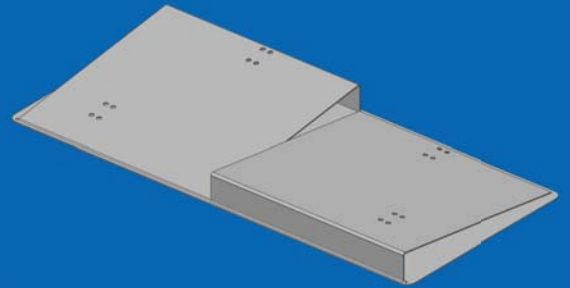
5



Red Outer Works

Blue Outer Works

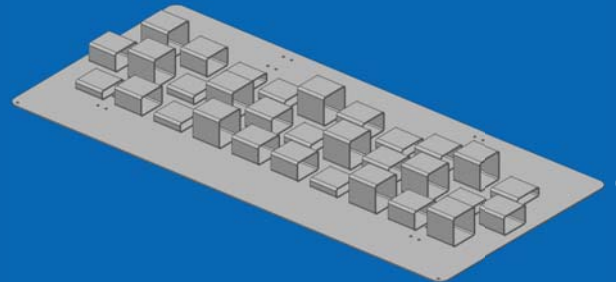
5



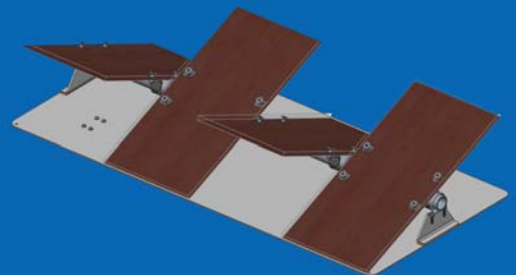
4



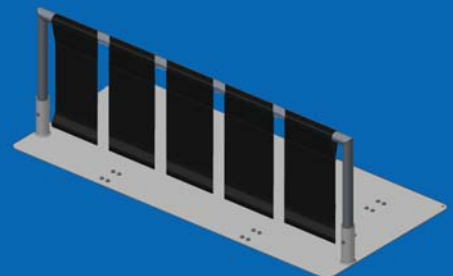
3



2

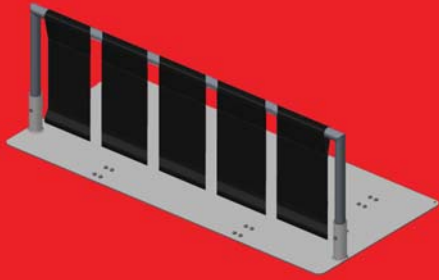


1

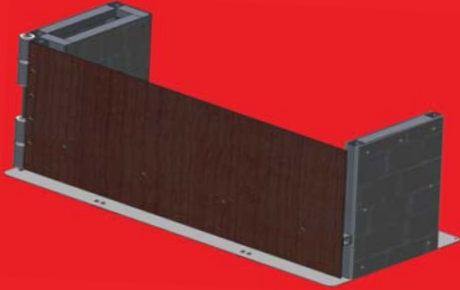


Practice Field 3

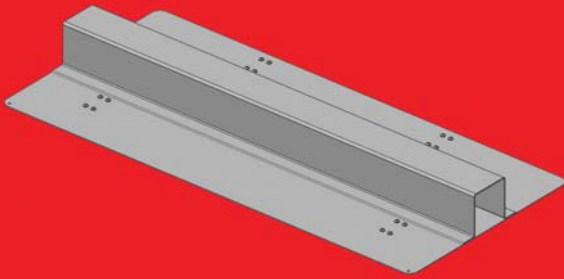
1



2



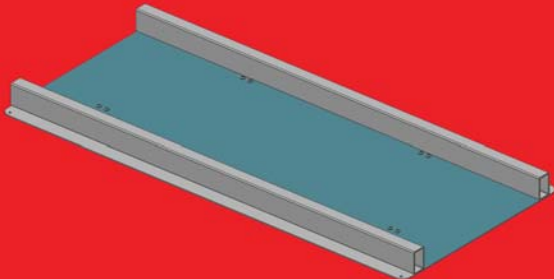
3



4



5



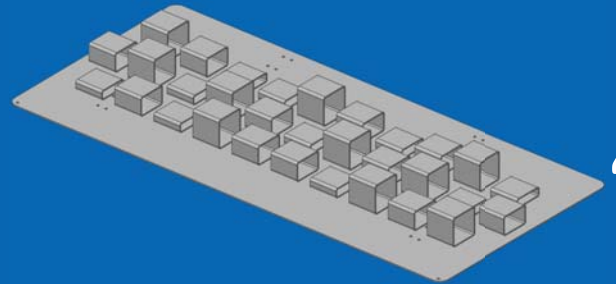
Red Outer Works

Blue Outer Works

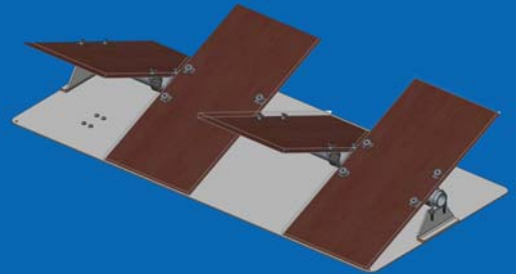
5



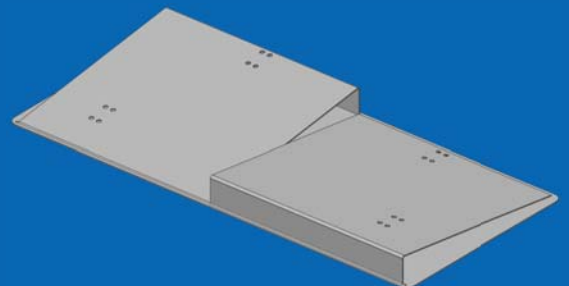
4



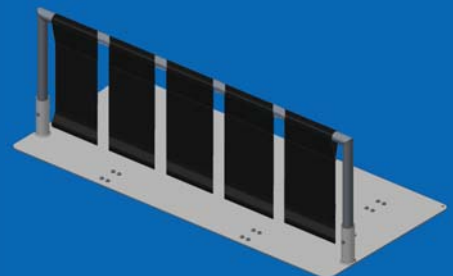
3



2

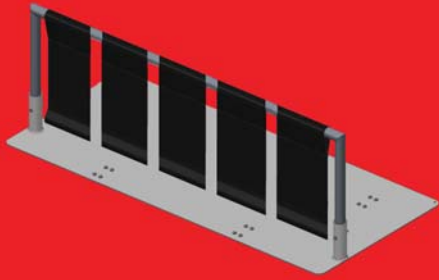


1

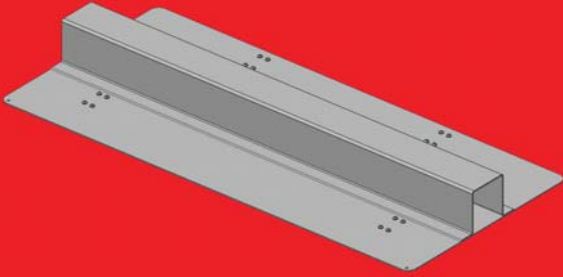


Practice Field 4

1



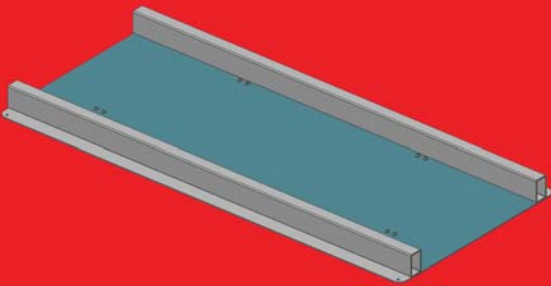
2



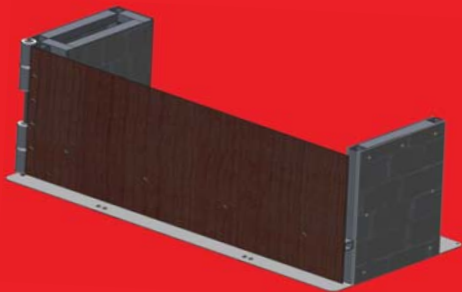
3



4



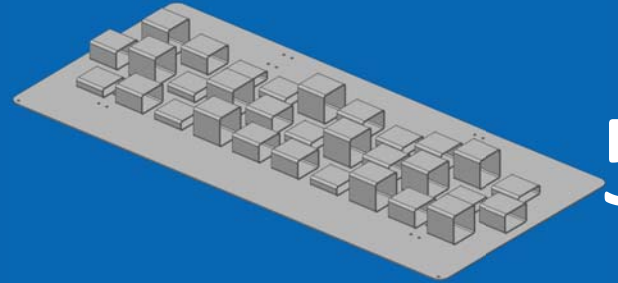
5



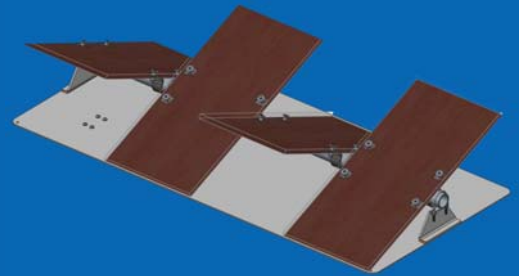
Red Outer Works

Blue Outer Works

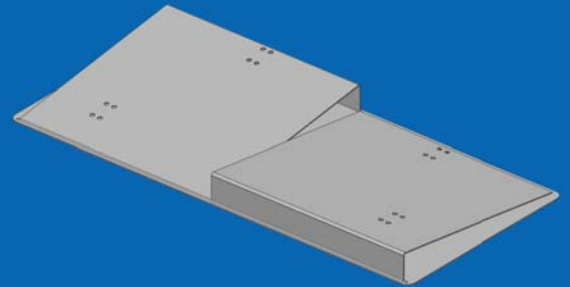
5



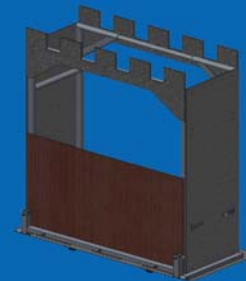
4



3



2



1

